

# Marks & Spencer

Janus and Sirius Debugger

Building HTML using SOAP

# Agenda

- Overview
  - Marks & Spencer (M&S)
  - Development environment
- Janus and Sirius Debugger
  - Developer Workstations
  - Access Control System
- Building HTML
  - User Class to generate xHTML
  - Examples and demonstration

# Marks & Spencer

- Our Stores
  - Began in Leeds Market in 1884
  - Now over 450 stores located throughout the UK
  - Over 130 franchise stores in more than 30 countries
- Our Products
  - Clothing, Home, Foods, Finance
- Brand Image
  - Number 68 worldwide

# Development Environment

- Foods Retail Systems
  - M204DEV2
- Customer Information Systems
  - M204DEV1
- System Managers
  - M204TEST & M204DEV3

# Development Environment

- Previous Configuration
  - Model 204 V5.1 with Sirius Mods V6.8
- Current Configuration (April 2007)
  - Model 204 V6.1 with Sirius Mods V6.9
- Development team
  - Expandable to 60 people UK and Offshore

# Marks & Spencer

## Janus and Sirius Debugger

# Agenda

- Overview
  - Marks & Spencer (M&S)
  - Development environment
- Janus and Sirius Debugger
  - Developer Workstations
  - Access Control System
- Building HTML
  - User Class to generate xHTML
  - Examples and demonstration

# Debugger Implementation Options

- Individual workstation  
  - Software Maintenance \* License costs
- Citrix server  
  - Not compatible
- Development workstations  
  - fixed license cost - 10 shared XP workstations
  - Remote Desktop Connection

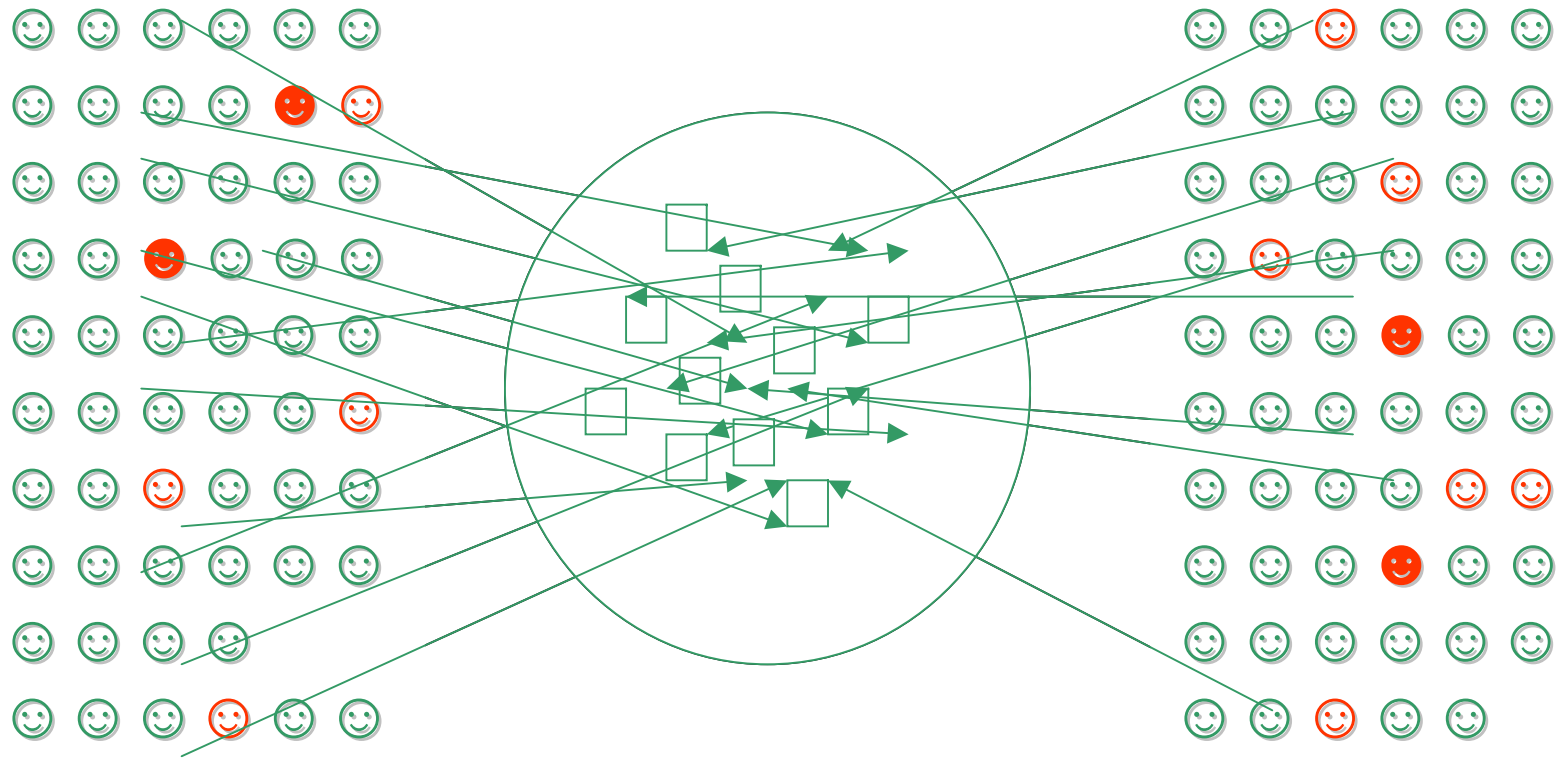
# Online Configuration

- Online Updates
  - ZAPs applied to ONLINE
  - User 0 updates - DEBUGPAG and DEBUGMAX
- Installation Files
  - Restore SIRDEBUG installation file
  - Copy and run SETUP file to each workstation
- Janus Defines
  - Server ports and Client Socket ports defined to each Online

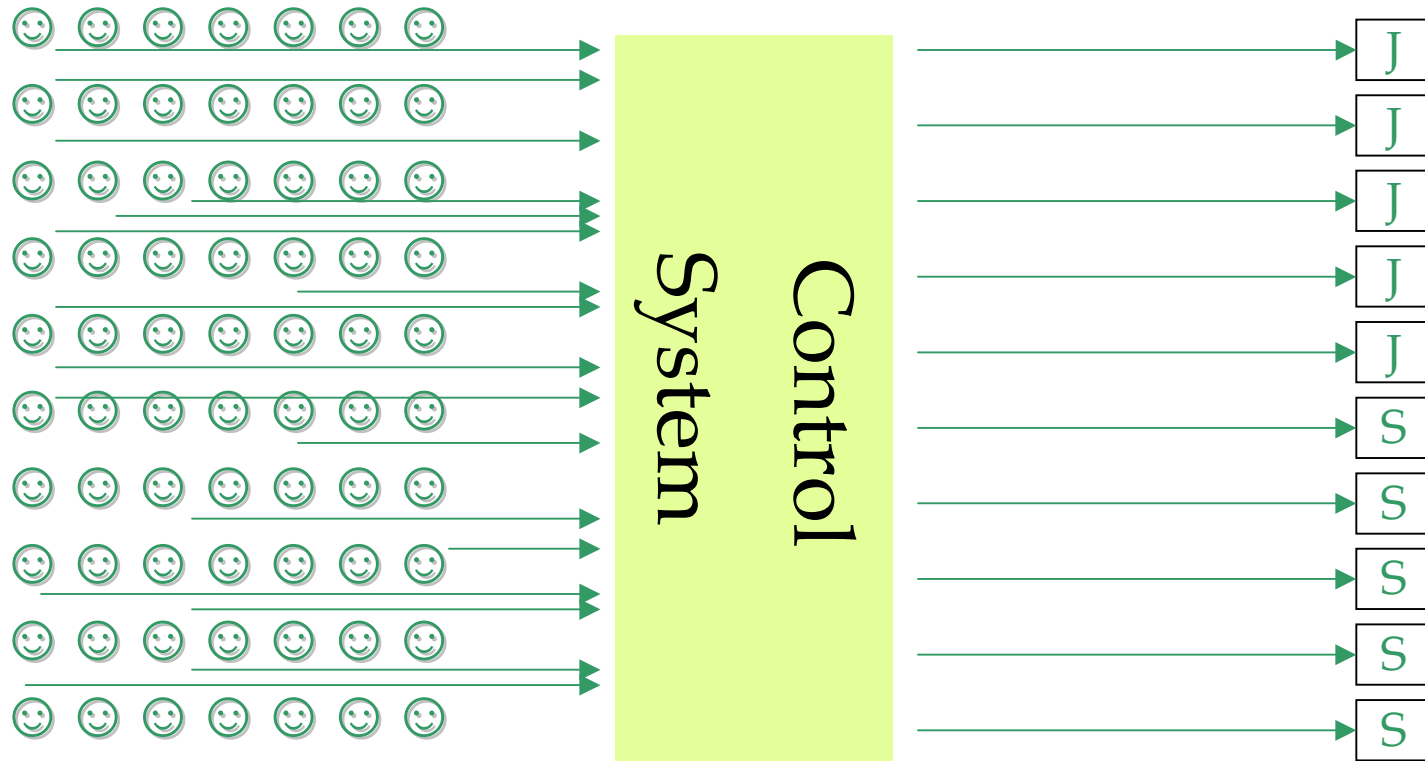
# Workstation Configuration

- Janus debugger workstations
  - Web applications
  - Internet options reset – proxy server
  - Configuration XML file updated with all IP/Port combinations
- Sirius Debugger workstations
  - 3270 applications
  - IP address saved for SIRIUS DEBUG ON command
  - Configuration XML file intentionally left empty

# Chaos



# Order



# Access Control System

- Janus Web application
  - Prevents conflict
  - Hyperlink for workstation access
  - SIRIUS DEBUG ON command \*
- Visibility
  - View current users
  - Limit number of users to License agreement
- Audit
  - History and usage

# Access Control System

## Debugger Control System

Workstation Name	User Information	Date Started	Link
------------------	------------------	--------------	------

### SIRIUS DEBUGGER workstations

DV00466  
DV00472  
DV00465  
DV00440  
DV00467

M204DEV1

M204DEV2

M204DEV3

M204TEST

Refresh

### JANUS DEBUGGER workstations

DV00389  
DV00471  
DV00470  
DV00469  
DV00468

Assign

Refresh

# Sirius Debugger

## Debugger Control System

Workstation Name	User Information	Date Started	Link
Your SIRIUS DEBUGGER workstation for M204DEV2			
DV00466	DFH012 ( B5656131) Paul M. Webb (185998)	19/04/2007	<input type="button" value="Logon"/>
SIRIUS DEBUG ON DEBCLIENT 10.128.137.174 8081 6004			

### SIRIUS DEBUGGER workstations

DV00472  
DV00465  
DV00440  
DV00467

### JANUS DEBUGGER workstations

DV00389  
DV00471                      DFH042 (P1069479)  
                                    Padders (187371)                      19/04/2007  
DV00470  
DV00469  
DV00468

# Sirius Debugger

- Command Line

```
> SIRIUS DEBUG ON DEBCLIENT 10.128.137.174 8081  
6004
```

- Response

```
*** MSIR.0915: Debugging is on: client is 10.128.137.174  
port 8081, sessionID:- 00023001D688668
```

# Janus Debugger

## Debugger Control System

Workstation Name	User Information	Date Started	Link
<b>Your JANUS DEBUGGER workstation</b>			
DV00389	DFH012 ( B5656131) Paul M. Webb (185998)	18/04/2007	<input type="button" value="Logon"/>

### SIRIUS DEBUGGER workstations

DV00466  
DV00472  
DV00465  
DV00440  
DV00467

### JANUS DEBUGGER workstations

DV00471	DFH042 (P1069479) Padders (187371)	19/04/2007
DV00470		
DV00469		
DV00468		

# Logon Hyperlink

DV00466	DFH012 ( B5656131) Paul M. Webb (185998)	26/02/2007	Logon
SIRIUS DEBUG ON DEBCLIENT 10.128.137.174 8081 6004			

- Logon Hyperlink

file://servername/Fileshare/Janus Debugger/**DWSDV00466.bat**

- Batch file contents (**DWSDV00466.bat**)

```
C:\WINNT\System32\mstsc.exe /v:dv00466  
exit
```

- Terminal Services Command → Remote Desktop connection

# Summary

- Development workstations advantages
  - Software install and maintenance
  - License cost
  - Shared service

# Marks & Spencer



# Marks & Spencer

## Building HTML using SOAP

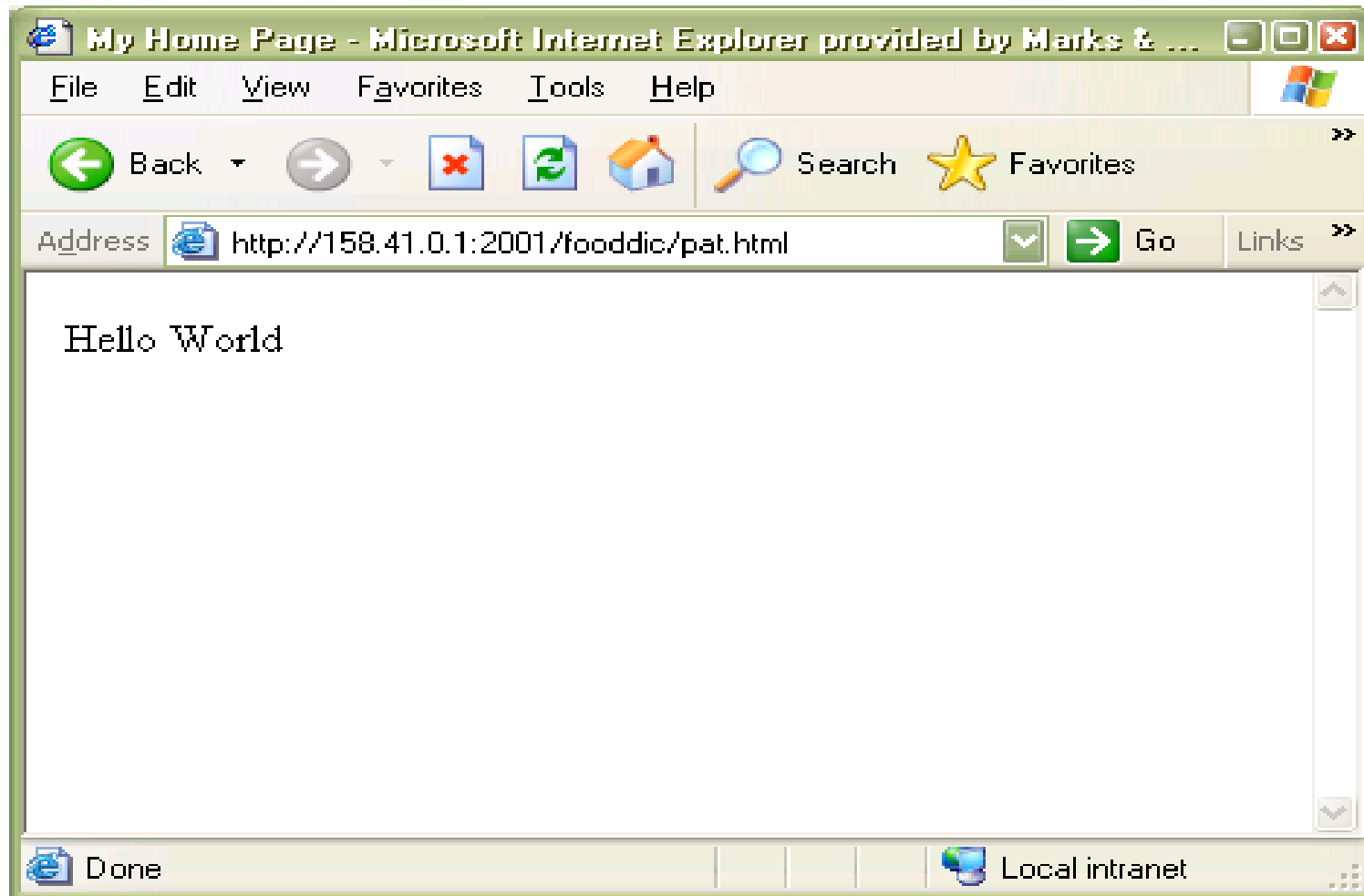
# Agenda

- Overview
  - Marks & Spencer (M&S)
  - Development environment
- Janus and Sirius Debugger
  - Developer Workstations
  - Access Control System
- Building HTML
  - User Class to generate xHTML
  - Examples and demonstration

# HTML Class

- User Class
  - Generates xHTML
  - Uses JANUS SOAP Xml API
  - Continuous development
- Advantages
  - Shared Class
  - Hidden complex code
  - Code readability
  - HTML knowledge not required

# Example 1



# Code Comparison

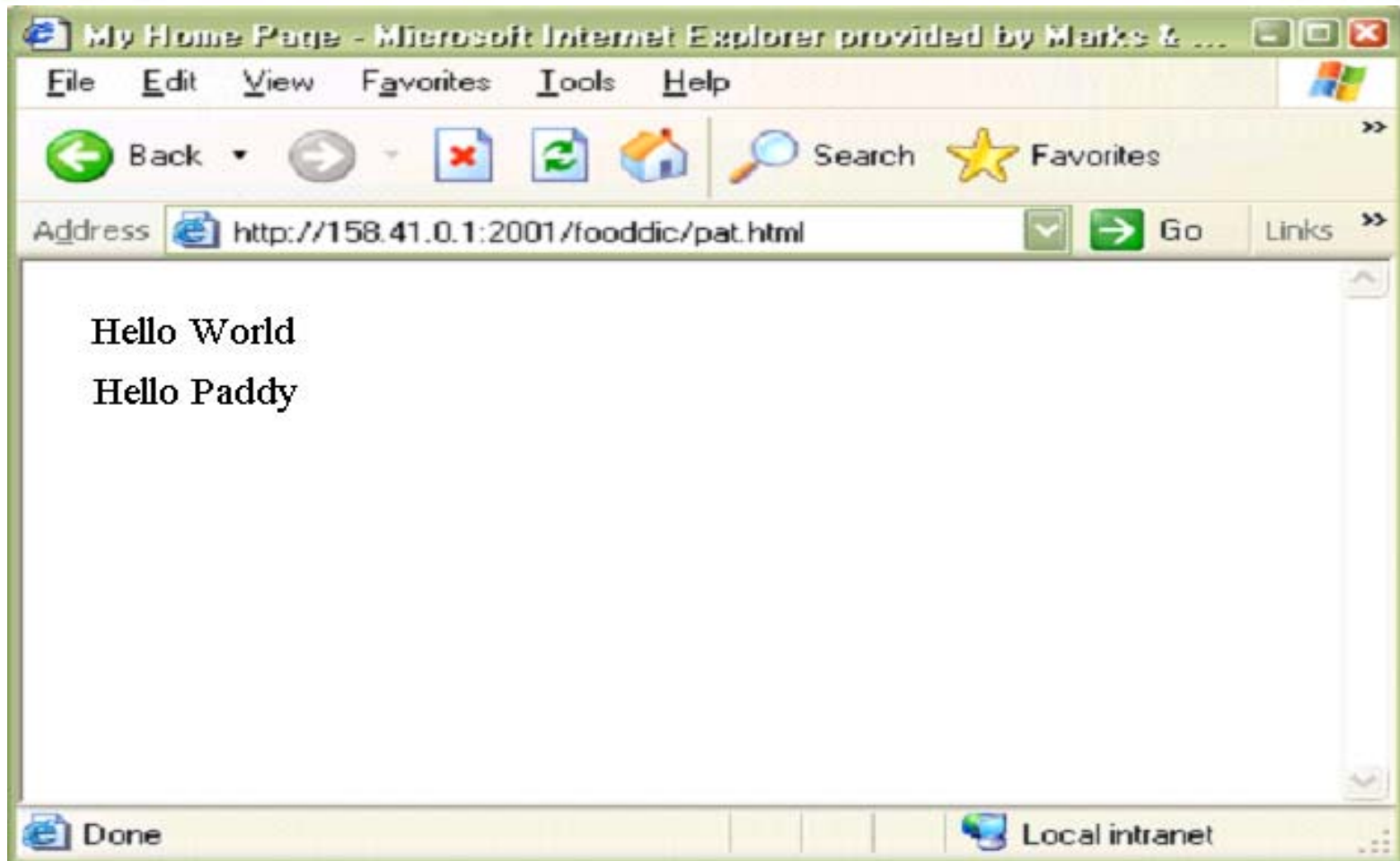
## Generate HTML Code

```
include class.html
%html is object html
%html = new('My Home Page')
%html:newTable()
%html:newTableRow
%html:newTableCell('Hello World')
%html:websend
```

## Instream HTML

```
HTML
<html>
<head>
  <title>My Home Page</title>
</head>
<body>
  <table>
    <tr>
      <td>Hello World</td>
    </tr>
  </table>
</body>
</html>
END HTML
```

# Example 2



# Code Comparison 2

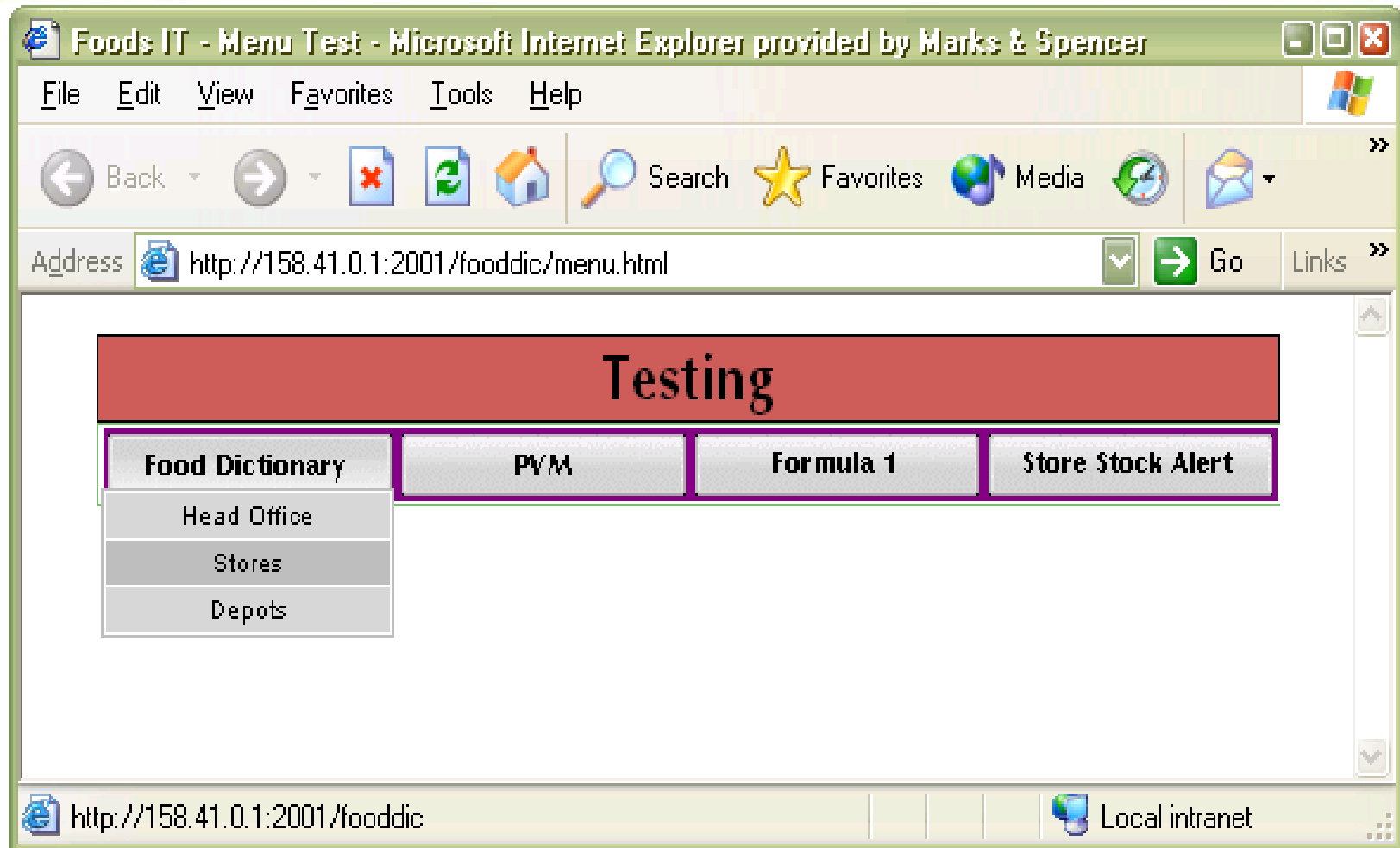
## Generate HTML Code

```
%html:newTable()
%html:newTableRow
%html:newTableCell('Hello World')
if %user = 'Genius' then
  %html:newTableRow
  %html:newTableCell('Hello Paddy')
end if
```

## Instream HTML

```
HTML
<table>
  <tr>
    <td>Hello World</td>
  </tr>
END HTML
If %user = 'Genius' then
HTML
  <tr>
    <td>Hello Paddy</td>
  </tr>
END HTML
end if
HTML
</table>
END HTML
```

# Example 3



# HTML Class – Complex

## Generate HTML Code

```
%html:setStyleSheet('zscript/htmlmenu.css')
```

```
.
```

```
.
```

```
*... Set up the menu Item with links
```

```
%html:newMenuItem
```

```
%html:addMenuSubItem('Head Office',url='../HeadOffice')
```

```
%html:addMenuSubItem('Stores',      url='../Store',  target='ho')
```

```
%html:addMenuSubItem('Depots',      url='../Depot',  target='ho')
```

```
%html:setMenuItem(html=%html,imgName='button1')
```

```
.
```

```
.
```

```
%h:showMenu
```

# Methods

`new(Constructor)`

`setStylesheet`

`setStyle`

`setScript`

`setOnload`

node.

`setForm`

`newTable`

`addTableCaption`

`newTableRow`

`newTableHeader`

`newTableCell`

`addTableCellText`

`addTableCellBreak`  
created.

`addTableHeaderText`

`newTableCellInput`

`newTableCellImage`

Sets up a new "Html" document.

Sets up the html CSS stylesheet link.

Sets up a local Style node.

Sets up a script block at the html level.

Sets up an Onload script to the body

Set up a Form name and a POST action.

Creates a new Table.

Adds a caption header to a Table.

Creates a new table Row.

Creates a new table Header cell.

Creates a new table Data cell.

Adds text to the table cell last created.

Adds a `<br>` break tag to the TD cell last

Adds text to the TH cell last created.

Adds an Input Field to the table cell last created.

Adds an Image to the table cell last created.

**Continued ...**

# Methods

newTableCellHref	Adds an <a> hyperlink ref to the table cell last created
addTableHeaderOnMouse	Adds onMouseOver/onMouseOut actions to the last TH cell.
addTableHeaderBreak created.	Adds a   break tag to the TH cell last created.
newHeading	Creates a <Hn> Heading element at the Form level.
newBreak	Creates a   break tag at the Form level.
newSelect	Creates a <select> dropdown list.
addSelectOption	Adds <option> data items to the dropdown list.
selectSelectOption	Sets an <option> data item matching %value to selected.
newPara	Creates a <p> break tag at the Form level.
newHR	Creates a <hr> horizontal rule at the Form level.
print	Print the XML Document.
websend	Send the XML Document to the browser.
addMenuSubItem	Adds Sub Items to a Dropdown Menu option.
setMenuItem	Sets up the next Menu item
showMenu	Combine the previous addMenuSubItem and setMenuItem

# Demonstration

[HTTP://158.41.0.1:2000/PVM](http://158.41.0.1:2000/PVM)

[HTTP://158.41.0.1:2001/PVM/Data.txt?Proc=PVM.OL.MENU](http://158.41.0.1:2001/PVM/Data.txt?Proc=PVM.OL.MENU)

# Marks & Spencer



# Marks & Spencer

Appendices ~

Paul.webb@marksandspencer.com

Patrick.bower@marksandspencer.com

[www.marksandspencer.com](http://www.marksandspencer.com)